

# Blu Dot Swatch Samples



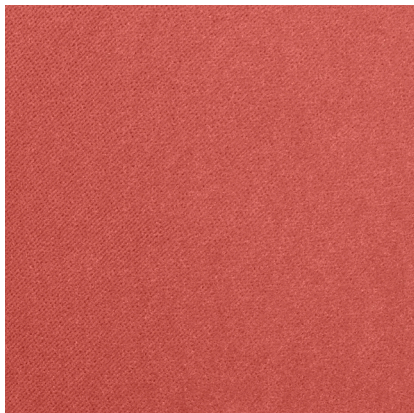
VERSION  
09.2020

# Contents

03	Fabrics
12	Outdoor Fabrics
14	Leathers
19	Metals
24	Woods



# Fabrics



### Ablin Velvet

82% Polyester / 18% Cotton / Double Rub 100,000



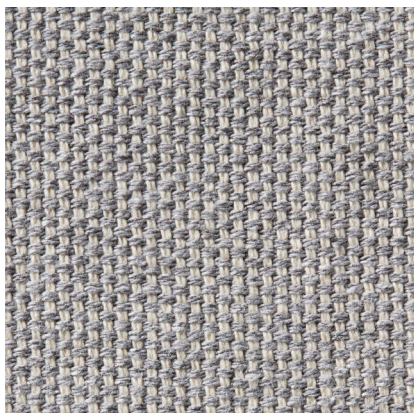
### Afton Charcoal

92% Polyester / 8% Linen / Double Rub 60,000



### Afton Grey

92% Polyester / 8% Linen / Double Rub 60,000



### Agnew Grey

17% Polyester / 29% Recycled Cotton / 54% Cotton / Double Rub 100,000



### Barto Sand

85% Cotton / 15% Polyester / Double Rub 50,000



### Copper Velvet

82% Polyester / 18% Cotton / Double Rub 100,000



### Camel Velvet

67% Polyester / 33% Cotton / Double Rub 70,000



### Condit Charcoal

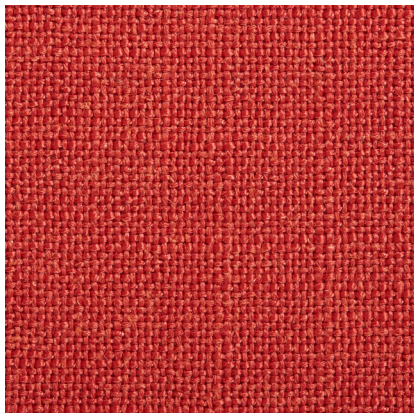
100% Polyester / Double Rub 30,000



### Condit Silver Grey

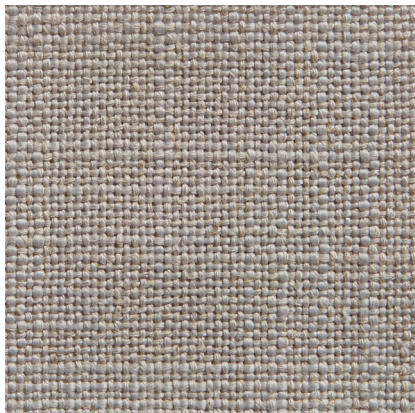
100% Polyester / Double Rub 30,000





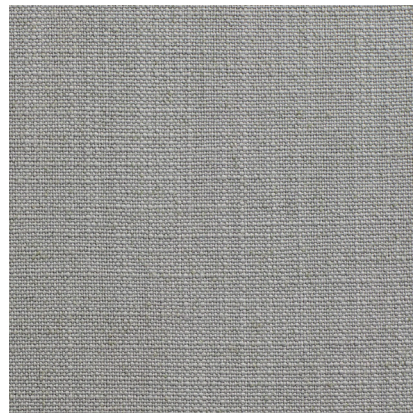
### Craig Red

80% Polyester / 20% Linen / Double Rub 30,000



### Craig Sand

92% Polyester / 8% Linen / Double Rub 30,000



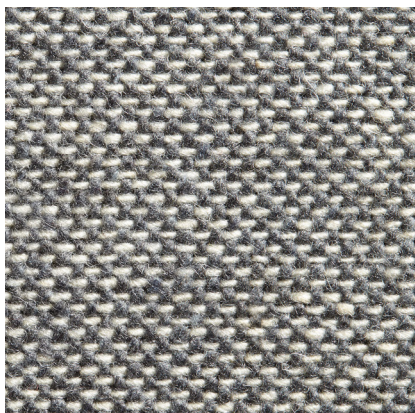
### Digit Grey

92% Polyester / 8% Linen / Double Rub 100,000



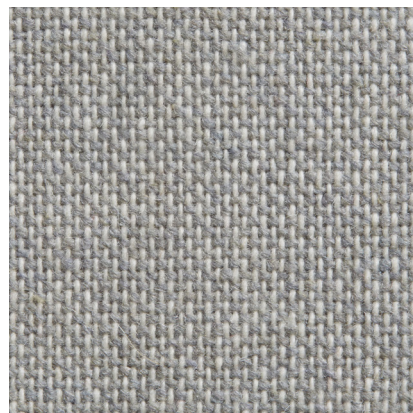
### Digit White

92% Polyester / 8% Linen / Double Rub 100,000



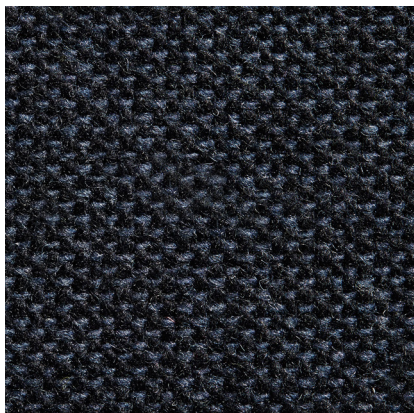
### Edwards Charcoal

70% Acrylic / 28% Wool / 2% Nylon / Double Rub 30,000



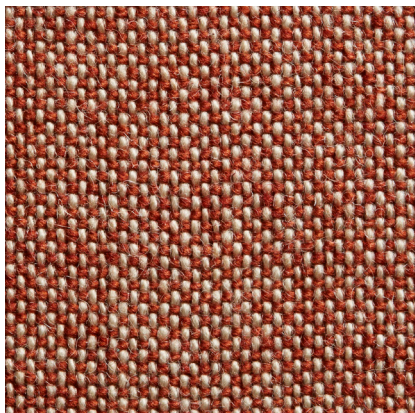
### Edwards Light Grey

70% Acrylic / 28% Wool / 2% Nylon / Double Rub 30,000



### Edwards Navy

70% Acrylic / 28% Wool / 2% Nylon / Double Rub 30,000



### Edwards Tomato

70% Acrylic / 28% Wool / 2% Nylon / Double Rub 30,000



### Gabro Grey

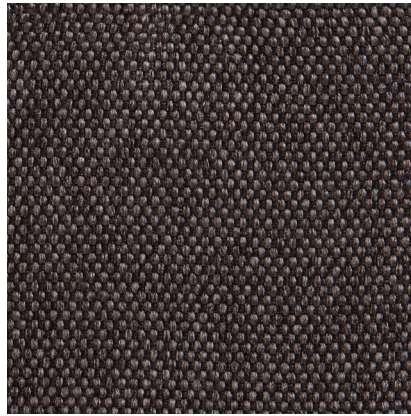
70% Wool / 20% Polyester / 5% Nylon / 5% Acrylic / Double Rub 100,000





## Gabro Light Grey

70% Wool / 20% Polyester / 5% Nylon /  
5% Acrylic / Double Rub 100,000



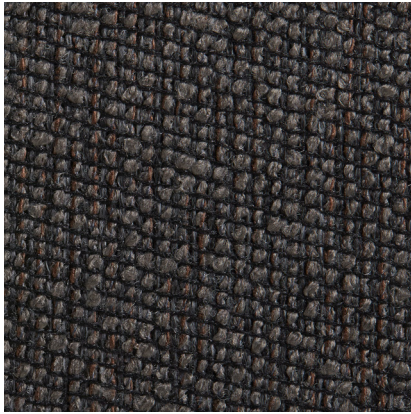
## Gunmetal

100% Polyester / Double Rub 30,000



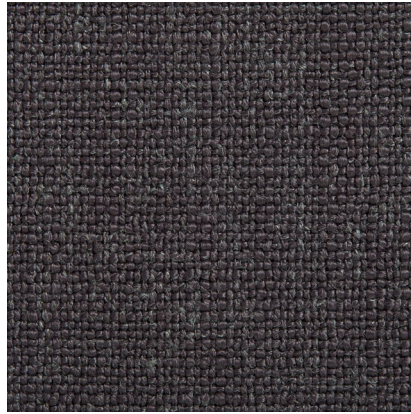
## Iron

50% Polyester / 43% Cotton / 7% Linen /  
Double Rub 15,000



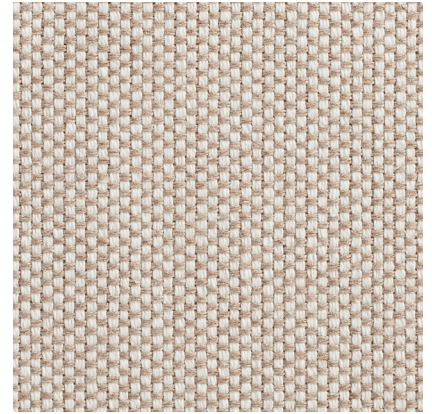
## Lava

58% Polyester / 23% Olefin / 19% Acrylic  
/ Double Rub 21,000



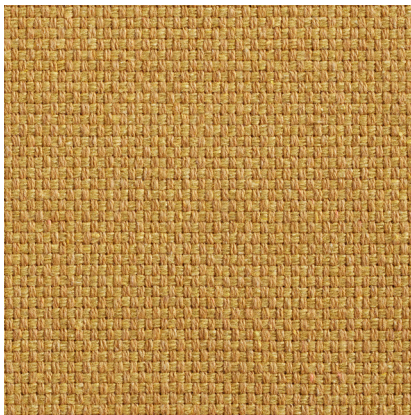
## Libby Charcoal

90% Polyester / 10% Linen / Double Rub  
85,000



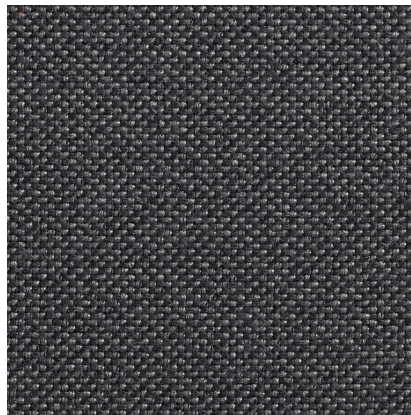
## Maharam Candor in Cannoli

70% PI Recycled Cotton / 30% Polyester /  
Double Rub 70,000



## Maharam Candor in Flare

70% PI Recycled Cotton / 30% Polyester /  
Double Rub 70,000



## Maharam Meld in Panda

68% PC Recycled Polyester / 32%  
Polyester / Double Rub 100,000



## Maharam Messenger in Everglade

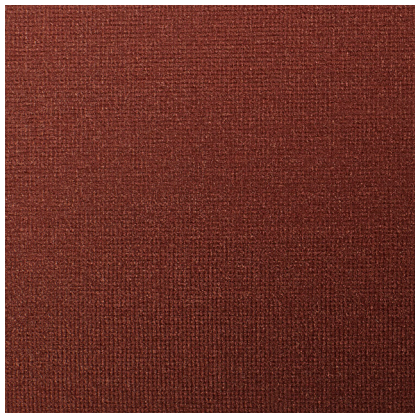
78% PI Recycled Polyester / 15% Polyester /  
7% Nylon / Double Rub 100,000





### Maharam Mode in Machine

80% PC Recycled Polyester / 20% Polyester / Double Rub 100,000



### Mahogany Velvet

100% Polyester / Double Rub 50,000



### Makada Charcoal

80% Polyester / 20% Cotton / Double Rub 50,000



### Mink Velvet

82% Polyester / 18% Cotton / Double Rub 100,000



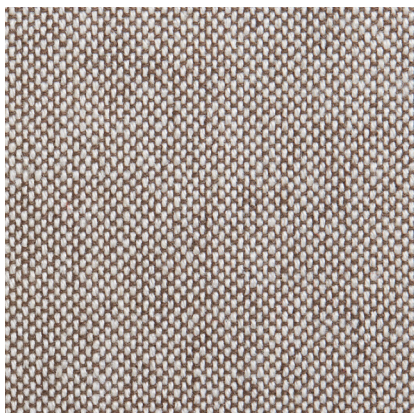
### Moss Velvet

82% Polyester / 18% Cotton / Double Rub 100,000



### Nixon Blue

46% Acrylic / 43% Cotton / 11% Polyester / Double Rub 30,000



### Nixon Sand

46% Acrylic / 43% Cotton / 11% Polyester / Double Rub 30,000



### Oatmeal

80% Polyester / 20% Linen / Double Rub 100,000



### Ochre Velvet

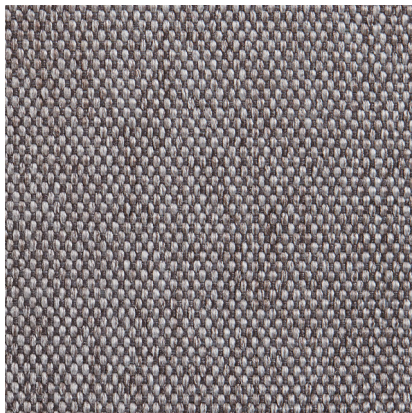
100% Polyester / Double Rub 50,000





## Otter Velvet

67% Polyester / 33% Cotton / Double Rub 70,000



## Pewter

100% Polyester / Double Rub 30,000



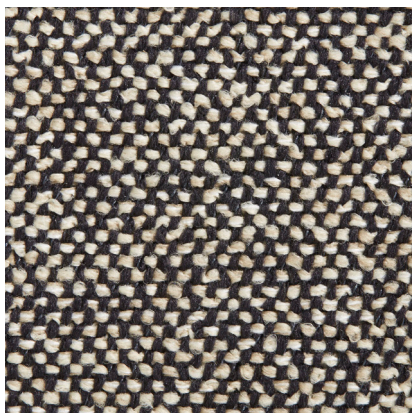
## Rostenkowski Blue

80% Polyester / 20% Linen / Double Rub 50,000



## Rostenkowski Otter

80% Polyester / 20% Linen / Double Rub 50,000



## Sanford Black

63% Polyester / 37% Acrylic / Double Rub 50,000



## Sanford Ceramic

63% Polyester / 37% Acrylic / Double Rub 50,000



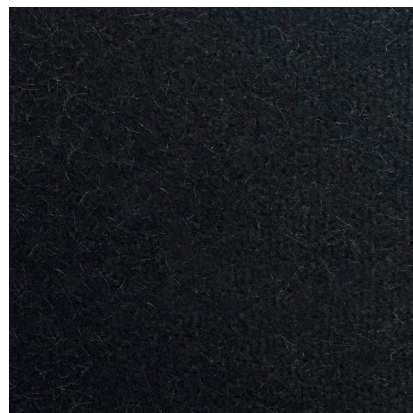
## Sanford Linen

63% Polyester / 37% Acrylic / Double Rub 50,000



## Sanford Oatmeal

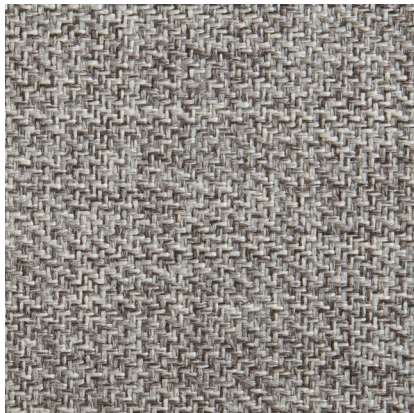
63% Polyester / 37% Acrylic / Double Rub 50,000



## Skidway Ink

100% Polyester / Double Rub 50,000





### Spitzer Grey

100% Polyester / Double Rub 100,000



### Storm Velvet

82% Polyester / 18% Cotton / Double Rub 100,000



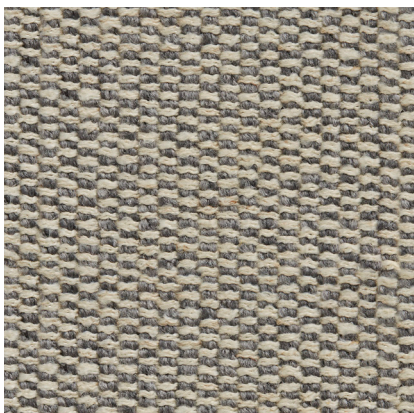
### Tait Beach

90% Polyester / 10% Linen / Double Rub 50,000



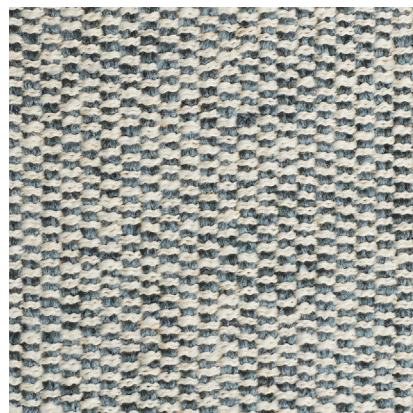
### Tait Blush

90% Polyester / 10% Linen / Double Rub 50,000



### Tait Charcoal

90% Polyester / 10% Linen / Double Rub 50,000



### Tait Marine

90% Polyester / 10% Linen / Double Rub 50,000



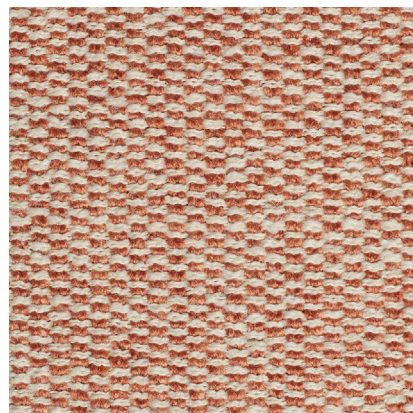
### Tait Ochre

90% Polyester / 10% Linen / Double Rub 50,000



### Tait Stone

90% Polyester / 10% Linen / Double Rub 50,000



### Tait Tomato

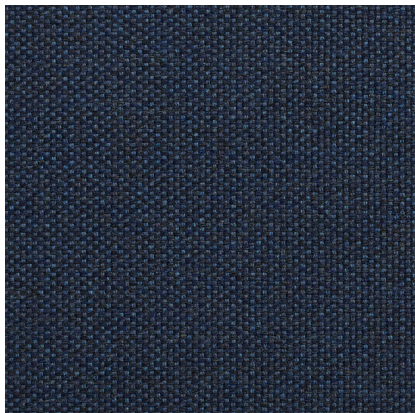
90% Polyester / 10% Linen / Double Rub 50,000





### Tofte Navy

85% Polyester / 15% Linen / Double Rub  
100,000



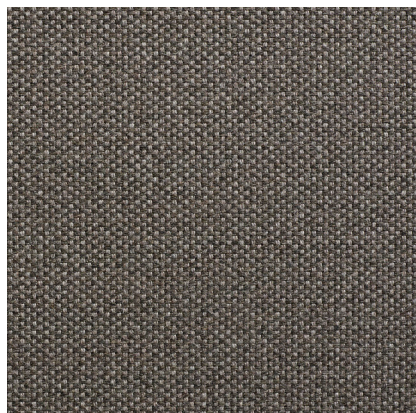
### Toohey Navy

97% Sunbrella Acrylic / 3% Other Fibers /  
Double Rub 45,000



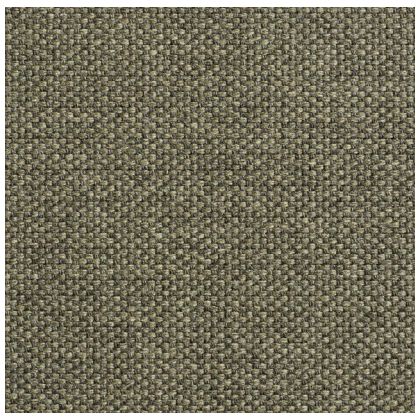
### Tomato Velvet

82% Polyester / 18% Cotton / Double Rub  
100,000



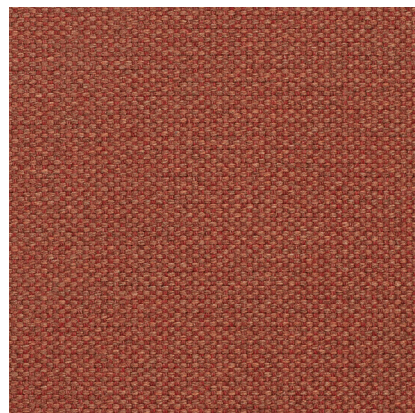
### Toohey Charcoal

97% Sunbrella Acrylic / 3% Other Fibers /  
Double Rub 45,000



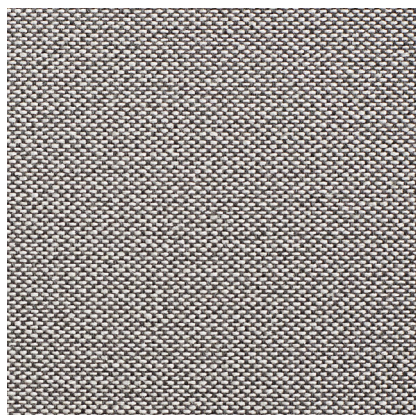
### Toohey Olive

97% Sunbrella Acrylic / 3% Other Fibers /  
Double Rub 45,000



### Toohey Tomato

97% Sunbrella Acrylic / 3% Other Fibers /  
Double Rub 45,000



### Vern Grey

59% Polyester / 41% Acrylic / Double Rub  
51,000



### Vesper Blush

80% Wool / 20% Nylon / Double Rub  
30,000



### Vesper Charcoal

80% Wool / 20% Nylon / Double Rub  
30,000





### Vesper Citron

80% Wool / 20% Nylon / Double Rub  
30,000



### Vesper Grasshopper

80% Wool / 20% Nylon / Double Rub  
30,000



### Vesper Light Grey

80% Wool / 20% Nylon / Double Rub  
30,000



### Vesper Lilac

80% Wool / 20% Nylon / Double Rub  
30,000



### Vesper Marine Blue

80% Wool / 20% Nylon / Double Rub  
30,000



### Vesper Olive

80% Wool / 20% Nylon / Double Rub  
30,000



### Vesper Tomato

80% Wool / 20% Nylon / Double Rub  
30,000

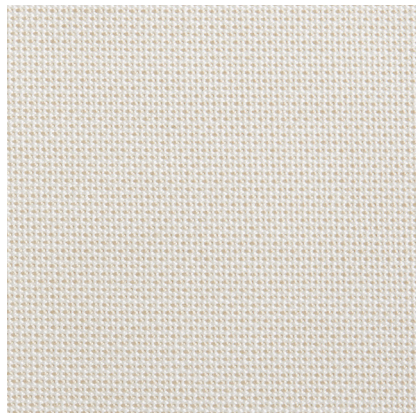


### Vesper Wheat

80% Wool / 20% Nylon / Double Rub  
30,000

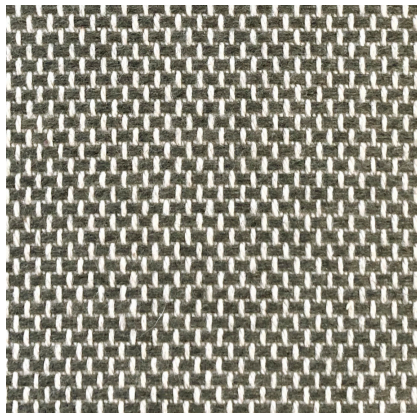
# Outdoor Fabrics





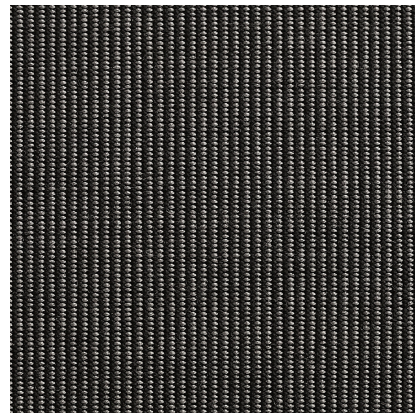
## Sunbrella Canvas

100% Sunbrella Acrylic / Double Rub  
15,000



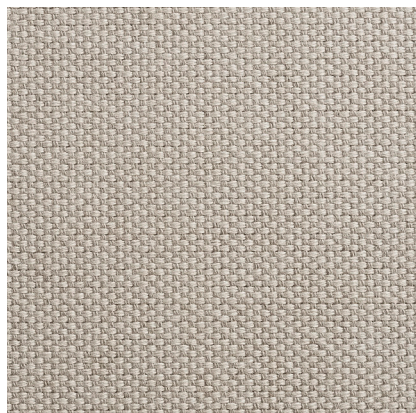
## Sunbrella Charcoal

100% Sunbrella Acrylic



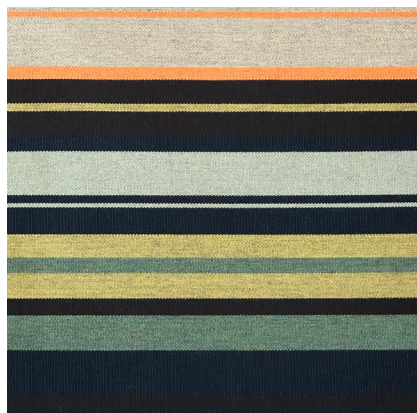
## Sunbrella Coal

100% Sunbrella Acrylic / Double Rub  
15,000



## Sunbrella Linen

97% Acrylic / 3% Other / Double Rub  
45,000



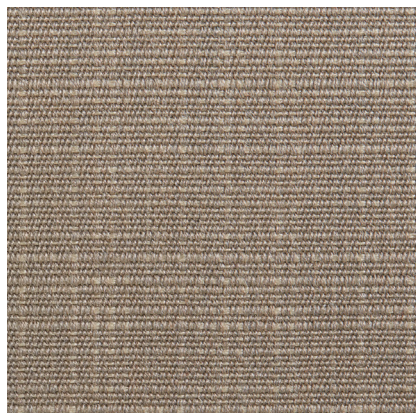
## Sunbrella Stripe

100% Sunbrella Acrylic / Double Rub  
30,000



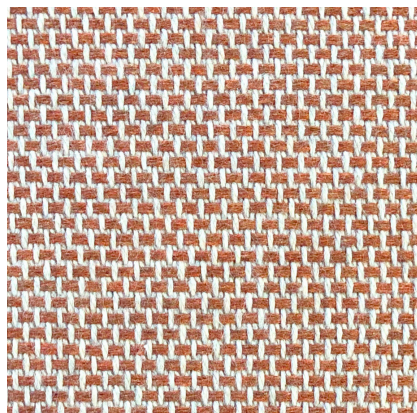
## Sunbrella Stripe 4

98% Sunbrella Acrylic / 2% Other Fibers



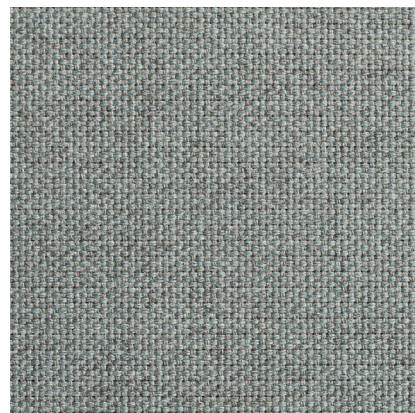
## Sunbrella Taupe

100% Sunbrella Acrylic / Double Rub  
15,000



## Sunbrella Tomato

100% Sunbrella Acrylic



## Toohey Breezy Blue

97% Sunbrella Acrylic / 3% Other Fibers /  
Double Rub 45,000

# Leathers





## Blush

A full aniline leather that will burnish and patina with wear; Features subtle shading and a high level of natural markings.



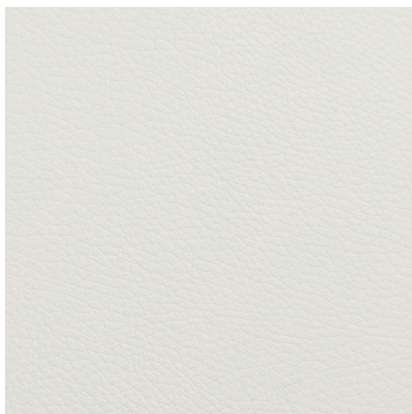
## Breezy Blue

This full grain aniline leather features an incredibly soft, full-bodied hand achieved through an innovative tanning process designed to maximize this leather's tactile appeal.



## Camel

An aniline leather that has been burnished and polished to create a cool hand and velvety texture with a slight sheen, enhancing the natural character of the leather; A lovely patina will develop over time; Color variation is a signature to the authenticity of natural leather.



## Cream

This semi aniline corrected leather has a pebble texture. it is marked by a silky smooth and drapery hand that exudes a more modern aesthetic. Offering color consistency throughout the hides, it is ideal for high traffic applications.



## Dark Brown

A top grain pigmented semi-aniline leather finished with a protective top coat to create a consistent and durable finish



## Day

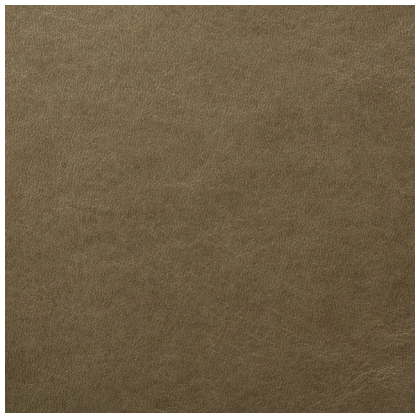
Full grain leather





## Granite

A full grain natural aniline leather made from the highest quality German hides; expertly tanned and milled to create a soft buttery hand and luxurious finish that will patina over time; Granite is a rich charcoal color. Color variation is a signature to the authenticity of natural leather, and should be viewed as a feature rather than a defect.



## Grey Green

A full aniline leather that will burnish and patina with wear; Features subtle shading and a high level of natural markings.



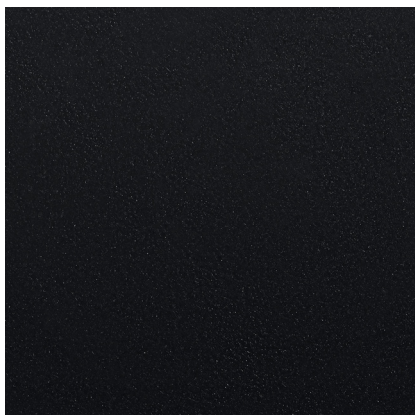
## Ink

An aniline leather with a soft matte finish and velvety feel; Variation in the natural leather becomes more beautiful with use; Color variation is a signature to the authenticity of natural leather.



## Loden Green

A full aniline leather that is buffed and finished with a light wax and clear top coat for a smooth, natural look and feel; The leather's surface is further polished with heat and pressure for a clean, modern aesthetic; Variation in the natural leather becomes more beautiful with use; Color variation is a signature to the authenticity of natural leather.



## Night

Full grain leather



## Otter

A full grain aniline leather with a soft and smooth hand; Natural markings will be visible enhancing the character of the leather; Color variation is a signature to the authenticity of natural leather.





## Slate

An aniline leather that has been burnished and polished to create a cool hand and velvety texture with a slight sheen, enhancing the natural character of the leather; A lovely patina will develop over time; Color variation is a signature to the authenticity of natural leather.



## Storm

This semi aniline corrected leather has a pebble texture. It is marked by a silky smooth and drapery hand that exudes a more modern aesthetic. Offering color consistency throughout the hides, it is ideal for high traffic applications.



## Oxblood

A full grain aniline leather with a soft and smooth hand; Natural markings will be visible enhancing the character of the leather; Color variation is a signature to the authenticity of natural leather.



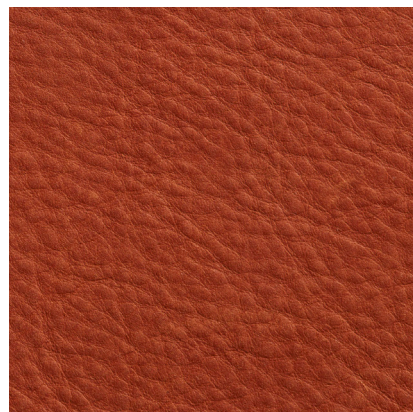
## Oyster Leather

An aniline leather with a soft matte finish and velvety feel; Variation in the natural leather becomes more beautiful with use; Color variation is a signature to the authenticity of natural leather.



## Slate Grey Superfiber

Synthetic leather-alternative upholstery; 30% polyethylene and 70% nylon



## Terracotta

An aniline leather with a soft matte finish and velvety feel; Variation in the natural leather becomes more beautiful with use; Color variation is a signature to the authenticity of natural leather.



## Toffee

A full grain natural aniline leather made from the highest quality hides; expertly tanned and milled to create a soft buttery hand and luxurious finish that will patina over time; Granite is a rich charcoal color. Color variation is a signature to the authenticity of natural leather.



## White

Durable top grain semi-aniline leather upholstery

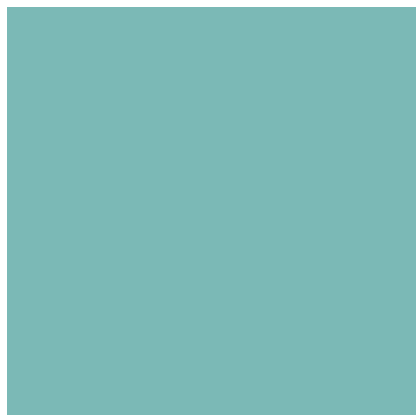


## White Superfiber

Synthetic leather-alternative upholstery; 30% polyethylene and 70% nylon



# Metals



Aqua

RAL 6034



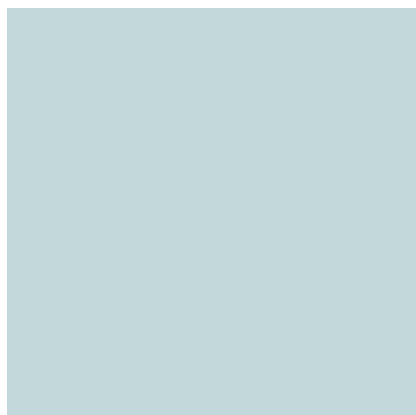
Black

RAL 9005



Blush

RAL 050-7020



Breezy Blue

RAL 220 80 05



Cobalt

RAL 5002



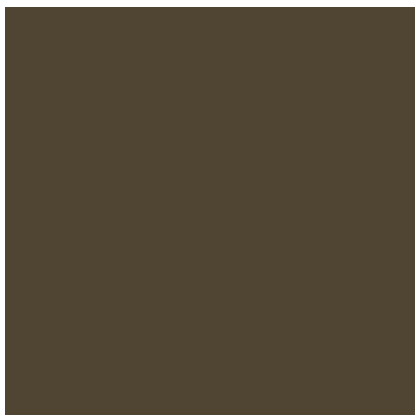
Complete Yellow

RAL 1003



Copper Pot

RAL 3018



Dark Olive

RAL 020 8005



FLW Red

NA



Grasshopper

RAL 120 50 30



Green

RAL 6017



Grey Blue

RAL 7000



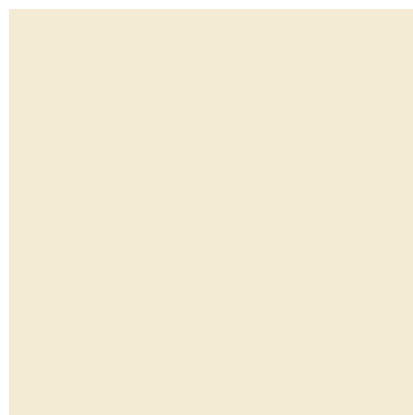
Grey Green

RAL 7033



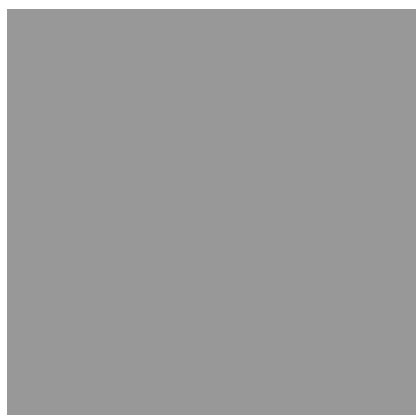
Humble Red

RAL 2002



Ivory

RAL 9001



Light Grey

RAL 7004



Marine Blue

RAL 220 40 10



Mustard

RAL 040-4040



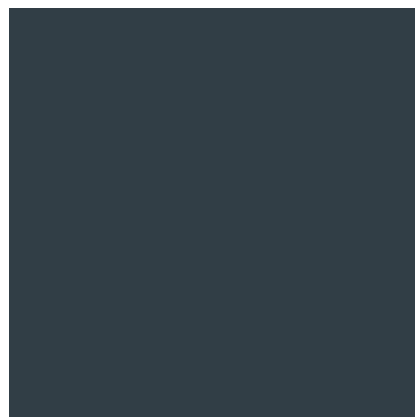
Natural Yellow

RAL 1012



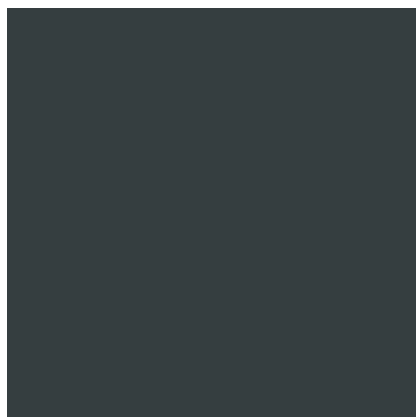
Navy

RAL 5008



Navy Green

RAL 020 8005



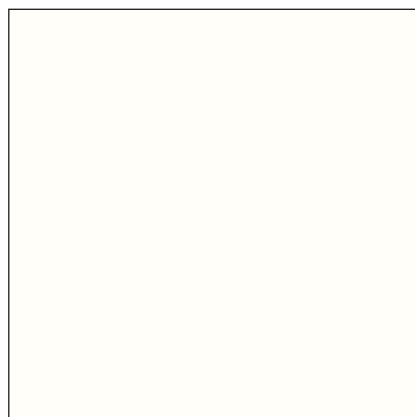
Oblivion

RAL 7021



Ochre

RAL 085 6050



Off White

RAL 9010



Olive

RAL 6003



Oxblood

RAL 010 20 20



Oyster

RAL 040 5005



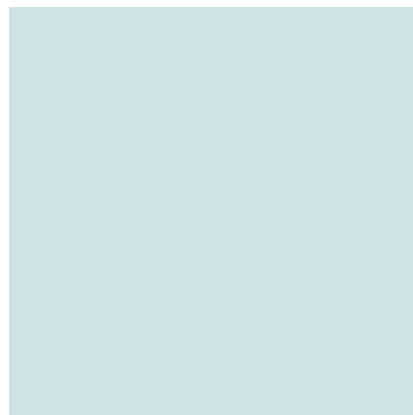
Putty

RAL 7044



Risk-Averse Grey

RAL 7039



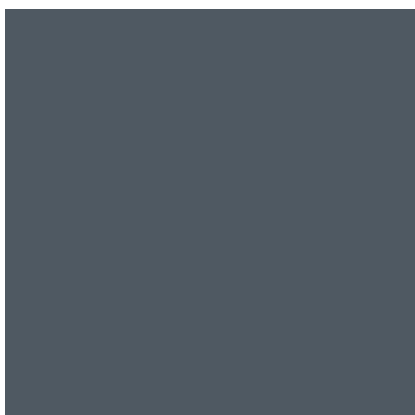
Robin's Egg Blue

RAL NA



Simple Blue

RAL 5012



Slate

RAL 7043



Sweetness

RAL 020 8005



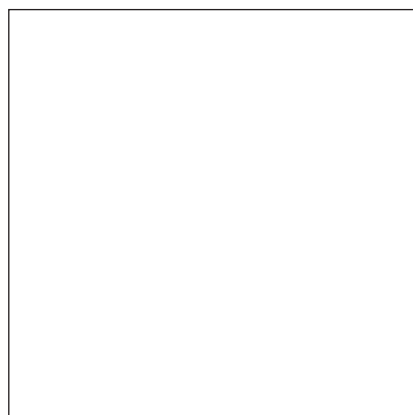
Tomato

RAL 040-4040



Watermelon

RAL 3018



White

RAL 9003

# Woods



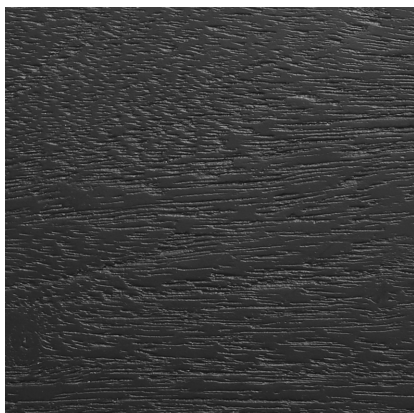
Acacia



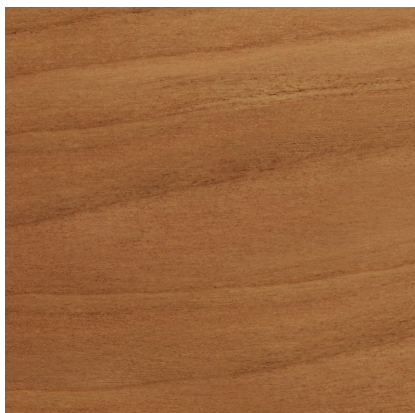
Black on Ash



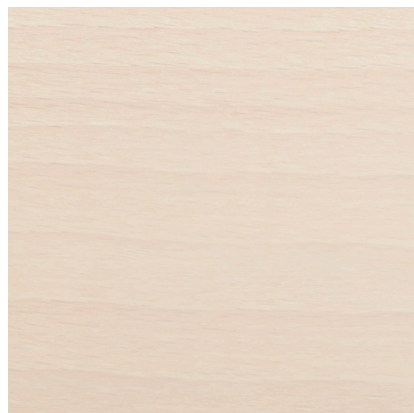
Black on Oak



Black-Stained Acacia



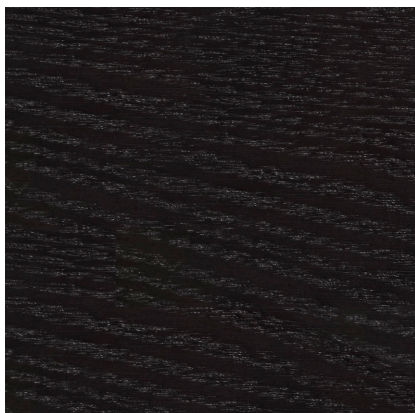
Cherry



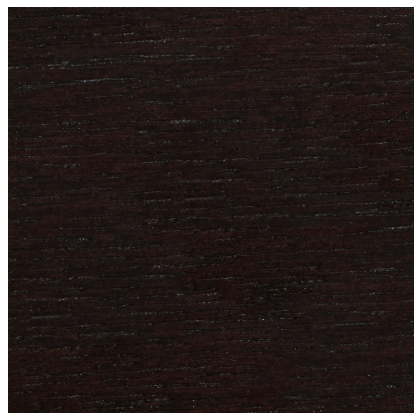
Day/Natural Beech



Ebony

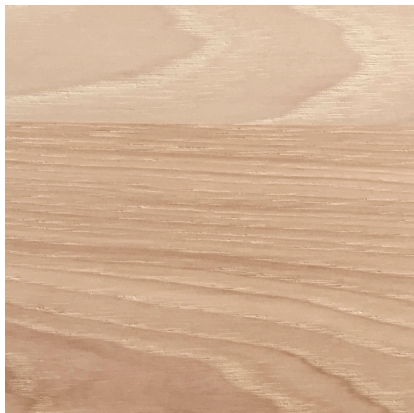


Graphite on Ash

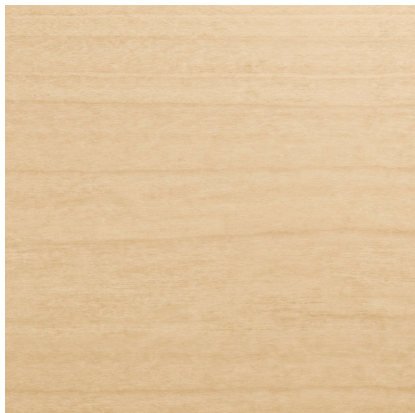


Graphite on Oak





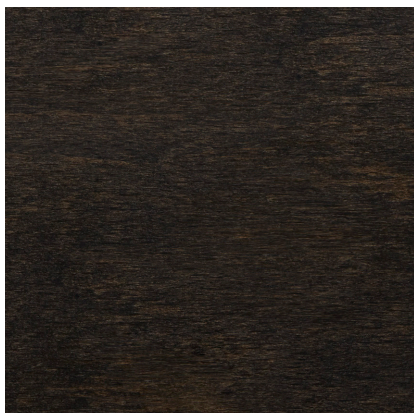
Hickory



Maple



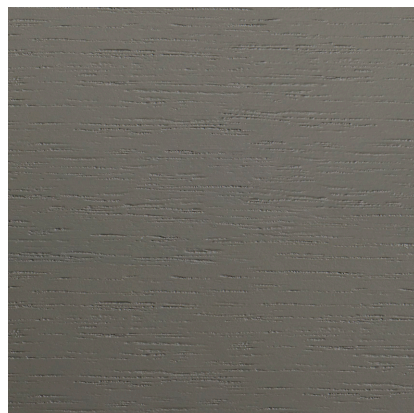
Marine Blue on Oak



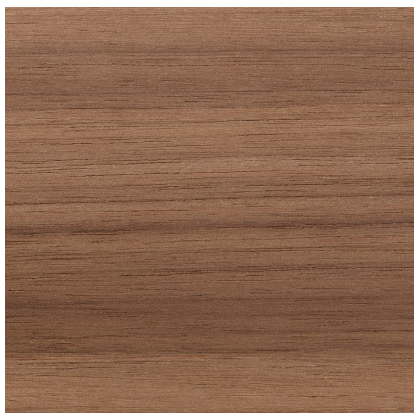
Night



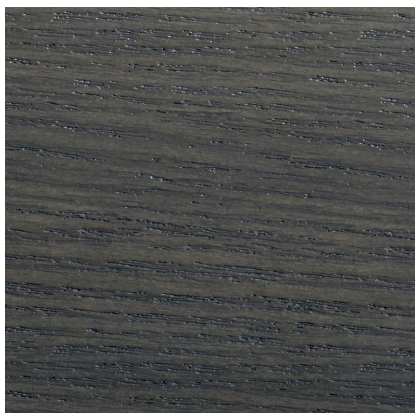
Olive on Ash



Risk-Averse Grey  
on Oak



Rustic Walnut



Smoke on Ash



Smoke on Beech





Technical White Oak



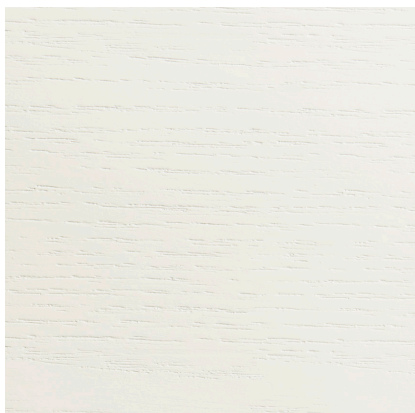
Walnut



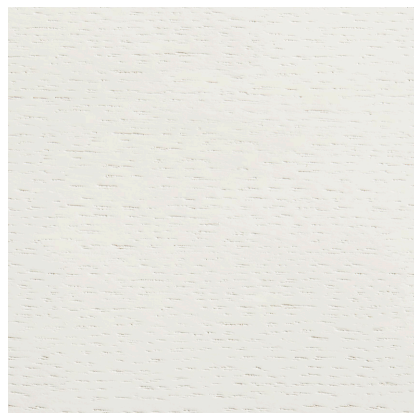
Weathered Oak



White Oak



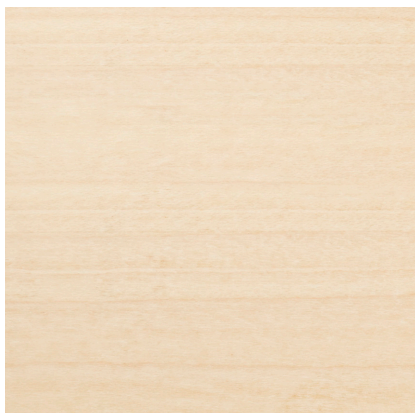
White on Ash



White on Oak



Whitewashed Ash



Whitewashed Maple